

Typical Glazing Specification:  
 White polyester powder coated aluminium lid  
 backed with 16mm thick structured polycarbonate

### X2 ROOFLIGHT SPECIFICATION

(FABRICATED FROM SELF FINISH WHITE EXTRUDED uPVC)

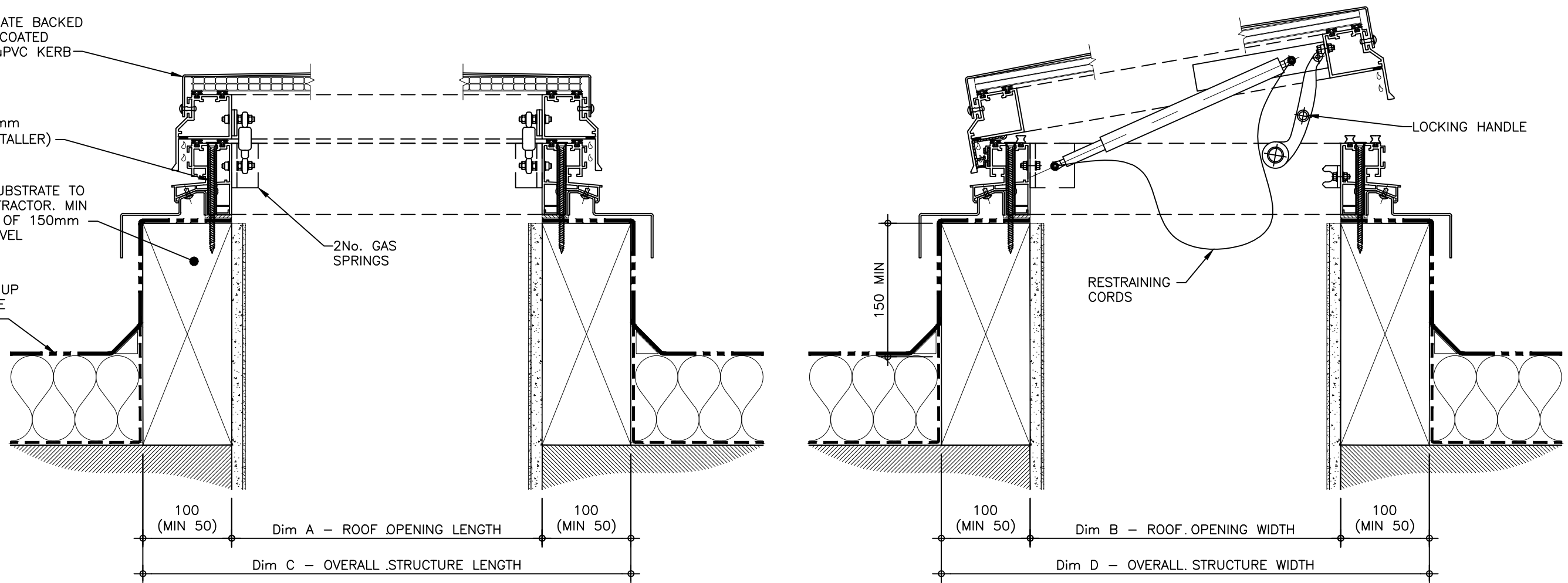
Quantity of Rooflight(s)	1no
Roof Opening - Length (mm)	Dim A
Roof Opening - Width (mm)	Dim B
Overall Structure - Length (mm)	Dim C
Overall Structure - Width (mm)	Dim D
Kerb Ventilation?	x
Opening Frame? (Gas spring operated)	✓

STRUCTURED POLYCARBONATE BACKED  
 LID, POLYESTER POWDER COATED  
 WHITE, POP RIVETED TO uPVC KERB

X2 KERB SECURED USING  
 SUITABLE FIXINGS @ 300mm  
 CENTRES (FIXINGS BY INSTALLER)

SUITABLE, CONTINUOUS SUBSTRATE TO  
 FULL PERIMETER BY CONTRACTOR. MIN  
 50mm WIDE, HEIGHT MIN OF 150mm  
 ABOVE FINISHED ROOF LEVEL

ROOF FINISHES DRESSED UP  
 AND OVER EXTERNAL FACE  
 OF UPSTAND BY ROOFING  
 CONTRACTOR



SECTION THROUGH LENGTH

SECTION THROUGH WIDTH

REV:	DATE:	DESCRIPTION:	DRN BY	DESCRIPTION:
0	12.09.16	First issue of this drawing	DL	Unventilated vertical uPVC access hatch fixed direct to roof, with gas sprung opening frame (with restraining cords), and insulated solid lid.
DRAWN BY:		CREATION DATE:	CHECKED BY:	SCALE(S)
DL		12.09.16	--	1:5 @ A3
REVISION:		0		
<b>Rooflights &amp; Glazing</b> Unit 5, Ironbridge Industrial Estate, 397 Retford Road, Sheffield, S13 9WA T:0114 408 1000 F:0114 238 5511 E:sales@rooflightsandglazing.co.uk W:www.rooflightsandglazing.co.uk				

**ROOFLIGHTS  
& GLAZING**

DRG No.  
**RG-X2-D-04G-ISL**