

NOTES

X No. REQUIRED

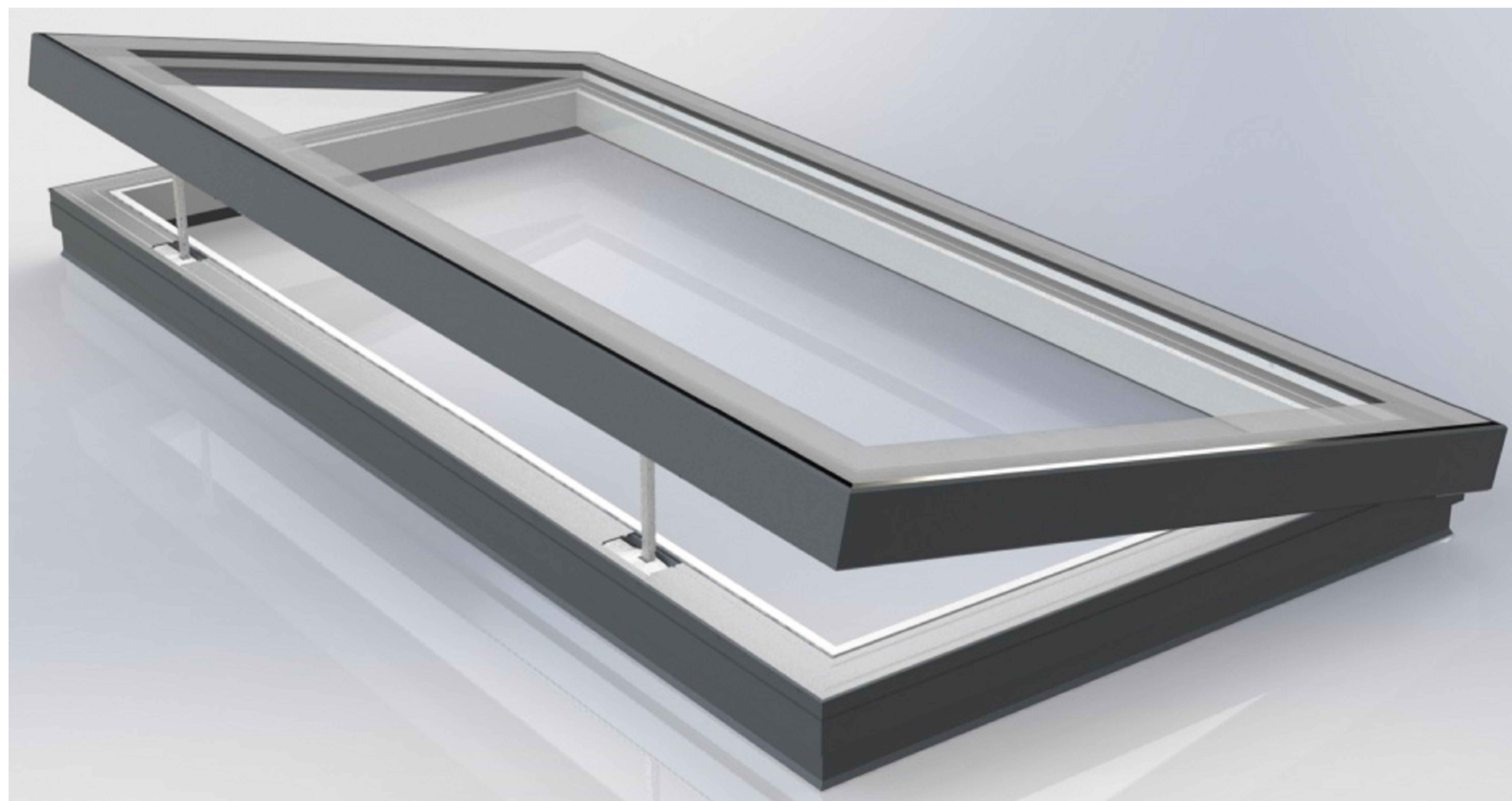
GLAZING SPECIFICATION:

OUTER SKIN: 6mm CLEAR TOUGHENED GLASS
WITH SANDBLAST BORDER TO FACE 2
CAVITY: 16mm ARGON FILLED + WARM EDGE SPACER
INNER SKIN: 6mm CLEAR HST TOUGHENED GLASS
WITH LOW-E COATING TO CAVITY FACE
SILICONE BONDED

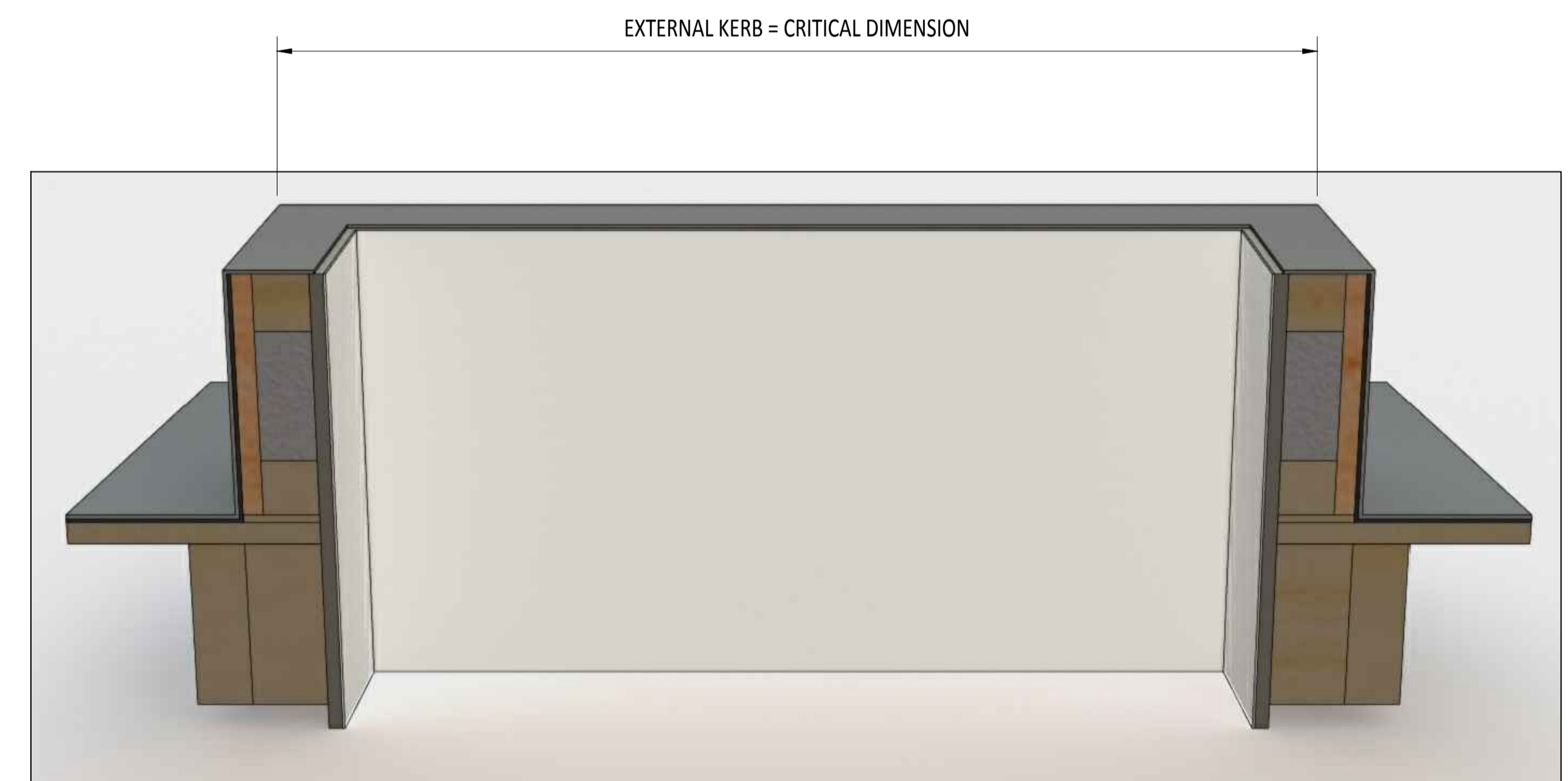
- ROOFLIGHT WEIGHT = 56 kg/m²
- STANDARD DESIGN LOAD = 750 N/m²
- BORDER SHOWN AS STANDARD TO COVER GLAZING FRAME.
- LIGHT TRANSMISSION = 78%
- SOLAR G VALUE = 0.63
- ACOUSTIC = 35 Rw dB
- CENTRE PANE U VALUE = 1.1W/m².K
- DIMENSIONS SHOWN DOWN THE SLOPE.
- KERB DETAILS SHOWN INDICATIVE DETAILED DESIGN BY OTHERS.
- 230v CHAIN LINK ACTUATOR + SINGLE POLE MOMENTARY SWITCH

STOCK ROOFLIGHTS

SPAN EXTERNAL KERB	LENGTH EXTERNAL KERB
1000	1000
1000	1200
1000	1500
1000	2000



ISO VIEW



SECTION X-X

IF IN DOUBT ASK
DO NOT SCALE

IT IS THE RESPONSIBILITY OF THE KERB DESIGNER TO ENSURE THE KERB WILL BE STRUCTURALLY ADEQUATE TO HOLD THE ROOFLIGHT. KERBS SHOWN ON R&G DRAWINGS ARE FOR ILLUSTRATION PURPOSES ONLY.

R&G would advise an installation with a minimum pitch of 5° for rooflight units to minimize water pooling. Whilst the product can be installed flat without detriment to the warranty, R&G cannot be held responsible for any excessive pooling of water to the surface of the rooflight post installation, if installed without an adequate fall.

THIS DRAWING MUST NOT BE COPIED OR PASSED TO A THIRD PARTY WITHOUT WRITTEN CONSENT FROM R&G LIMITED.

CHECKED
DATE
DRAWN
D. PUGH
DATE
13-12-2016

TOLERANCE UNLESS OTHERWISE STATED ±5
DIMENSIONS IN MM
SCALE NTS @ A1

MATERIAL ALUMINIUM + GLASS
FINISH POLYESTER POWDER COATING RAL 7015 SLATE GREY, 77% GLOSS

REV	AMENDMENTS	SIGNED	CHECKED	DATE

The London Rooflight Company
Telephone sales: 0207 118 1044
Fax: 0207 118 1047
E-mail: sales@londonrooflightcompany.co.uk

TITLE: STOCK HINGED 230v DOUBLE GLAZED FLATGLASS

The London Rooflight Company

DRAWING N°
RG-80-300
SHEET 1 OF 1